



**ALASKA DIVISION OF HOMELAND SECURITY &
EMERGENCY MANAGEMENT**



SITUATION REPORT 22-048 • FEBRUARY 17, 2022

Toll-Free 1.800.478.2337

Anchorage Area 907.428.7000

SEOC 907.428.7100

<p><u>SEOC Preparedness Level</u> Level 2 – Heightened Awareness</p>	<p>http://ready.alaska.gov</p>	<p><u>National Terrorism Advisory System:</u> Read the NTAS Bulletin here</p>
<p><u>Maritime Security (MARSEC)</u> Level:1-Minimum Appropriate Security Measures</p>	<p>WHO Novel Coronavirus Pandemic (COVID-19): 2019 Novel Coronavirus</p>	<p><u>Alaska Military Installation Force Protection Level:</u> FPCON Bravo</p>

(Significant changes from previous situation reports are in red.)

Significant Issues:

SEOC at Level 2 – *Heightened Awareness* – Statewide Severe Weather Impacts

The State Emergency Operations Center (SEOC) remains activated in a hybrid virtual/in-person Incident Command structure to manage the current state declared disaster responses and other incidents arising statewide.

Current Operations:

Interior Winter Storms - Disaster Assistance Centers

Under Governor Dunleavy’s January 3, 2022 declaration of state disaster for winter storms, in-person Disaster Assistance Centers for the state’s Individual Assistance program will open in the following communities over the next two weeks:

Delta Junction – Wednesday, February 23, through Thursday, February 24 from 9:00 am to 5:00 pm at the Delta Junction Community Center

Fairbanks – Tuesday, March 1, through Thursday, March 3 from 9:00 am to 5:00 pm at the Fairbanks National Guard Armory.

Online and telephone registration is also available. Please see the attached flyer for information.

Tununak – Washeteria Fire

Yesterday, Alaska State Troopers and the Alaska Department of Environmental Conservation advised the SEOC of a fire in Tununak’s Washeteria. There were no reported injuries, but initial indications are that the structure is a total loss. The SEOC is working with the community and involved agencies to determine community response and recovery needs.

Threat Level Changes:

None

State of Alaska Department of Health and Social Services (DHSS)

DHSS is now leading the State of Alaska COVID-19 Recovery through Department Operations, supported by SEOC and other state departments as required.

For current COVID-19 information, see:

<https://covid19.alaska.gov/>

<https://www.cdc.gov/coronavirus/2019-ncov/index.html>

NTAS BULLETIN

To read current or expired advisories, click the link below:

<https://www.dhs.gov/national-terrorism-advisory-system>

Travel Alerts and Conditions

For current driving conditions dial 511 or link to <http://511.alaska.gov/>

Barry Arm Landslide / Tsunami Risk

For the latest information on the Barry Arm Landslide and Tsunami risk, click here: [DGGS Barry Arm Landslide and Tsunami Hazard](#)

Recent Earthquakes

USGS Earthquake Information: <http://earthquake.usgs.gov/>

National Tsunami Warning Center: <http://tsunami.gov/>

Alaska Volcanoes

Davidof Alert Level: **Advisory** and Aviation Color Code: **Yellow**

Great Sitkin Alert Level: **Watch** and Aviation Color Code: **Orange**

Pavlof Alert Level: **Watch** and Aviation Color Code: **Orange**

Semisopchnoi Alert Level: **Watch** and Aviation Color Code: **Orange**

For Alaska Volcano updates, go to: <https://www.avo.alaska.edu/>

Air Quality Index (AQI) Advisories

For the most up to date Air Quality Index Advisories:

<http://dec.alaska.gov/Applications/Air/airtoolsweb/Home/Index>

Spills of Oil and Hazardous Substances

The ADEC Spill Prevention and Response page is located at:

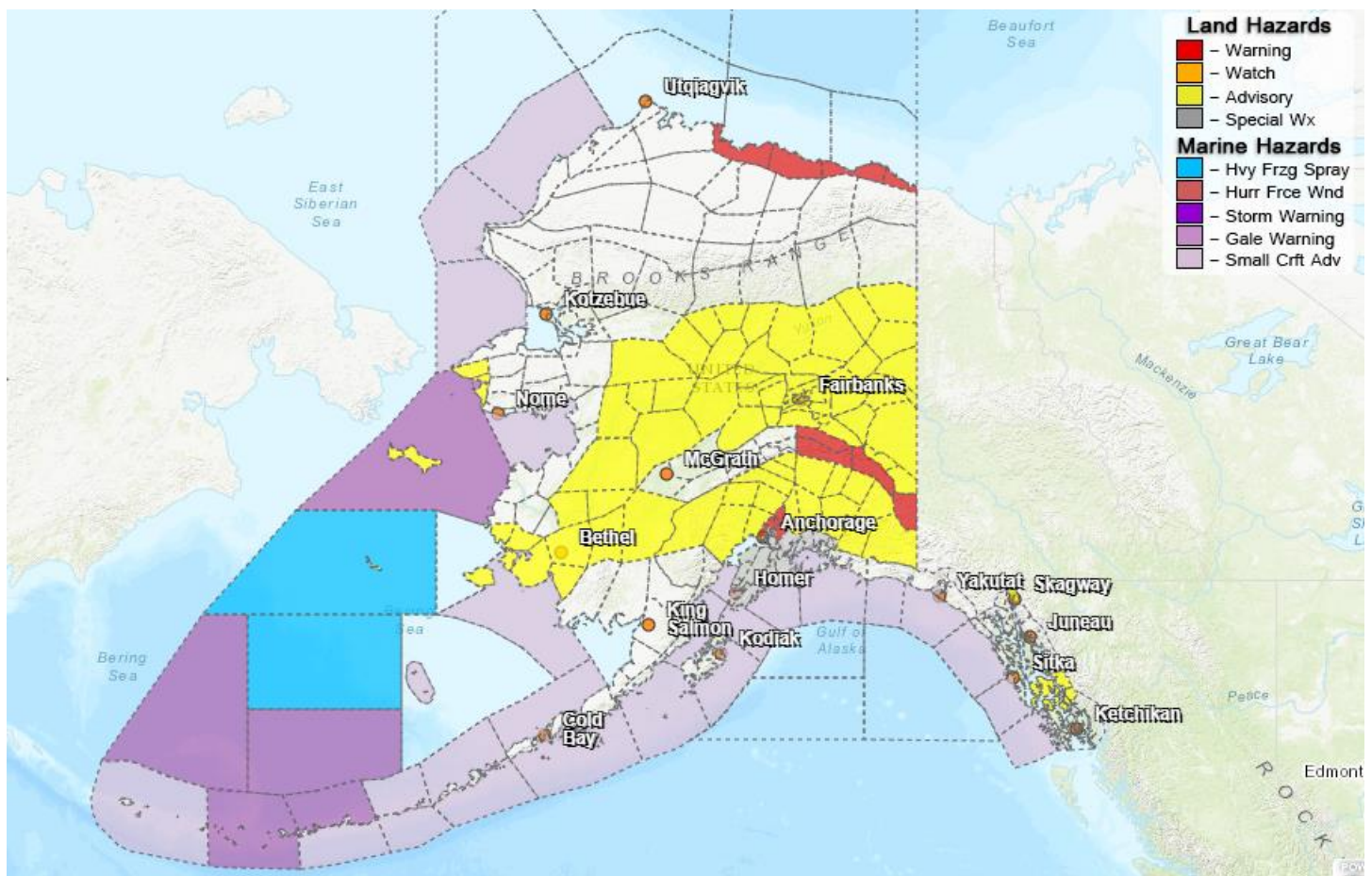
<http://dec.alaska.gov/spar/ppr/spill-information/response/>

Alaska Cyber Security Information

State Employees may sign up for cyber security notifications and alerts at

<https://oit.alaska.gov/security>

Significant Weather:



A Wind Chill Warning remains in effect for the Central and Eastern Beaufort Sea Coast until 3:00 P.M. today. Wind chills of up to -60°F are possible.

A Winter Storm Warning remains in effect until 9:00 A.M. tomorrow for the Eastern Alaska Range. Additional snow accumulations of 4 to 7 inches with localized amounts of up to 15 inches.

A Wind Chill Advisory remains in effect for St. Lawrence Island and the Bering Strait Coast until noon today.

A Dense Fog Advisory is in effect until 9:00 A.M. today for Petersburg.

Winter Weather Advisories are in effect for the following areas:

- Kuskokwim Delta – until 5:00 P.M. today. 2 to 6 inches of snow.
- Lower Yukon Valley – until 6:00 P.M. today. 3 to 5 inches of snow.
- Lower Kuskokwim Valley – until 9:00 P.M. today. Total snow accumulations of 6 to 11 inches.
- **Upper Koyukuk Valley – until 6:00 A.M. tomorrow. Up to 3 inches of snow and winds gusting to 40mph are likely to cause drifting snow along Dalton Highway summits.**
- Susitna Valley – until 7:00 A.M. tomorrow. Total snow accumulations of 6 to 10 inches.
- Matanuska Valley – until 9:00 A.M. tomorrow. Total snow accumulations of 6 to 10 inches.
- Copper River Basin – until 11:00 A.M. tomorrow. 8 to 16 inches of snow.
- **Lower Koyukuk and Middle Yukon Valleys – until noon tomorrow. 4 to 6 inches of snow with localized amounts of up to 9 inches expected south of Galena.**

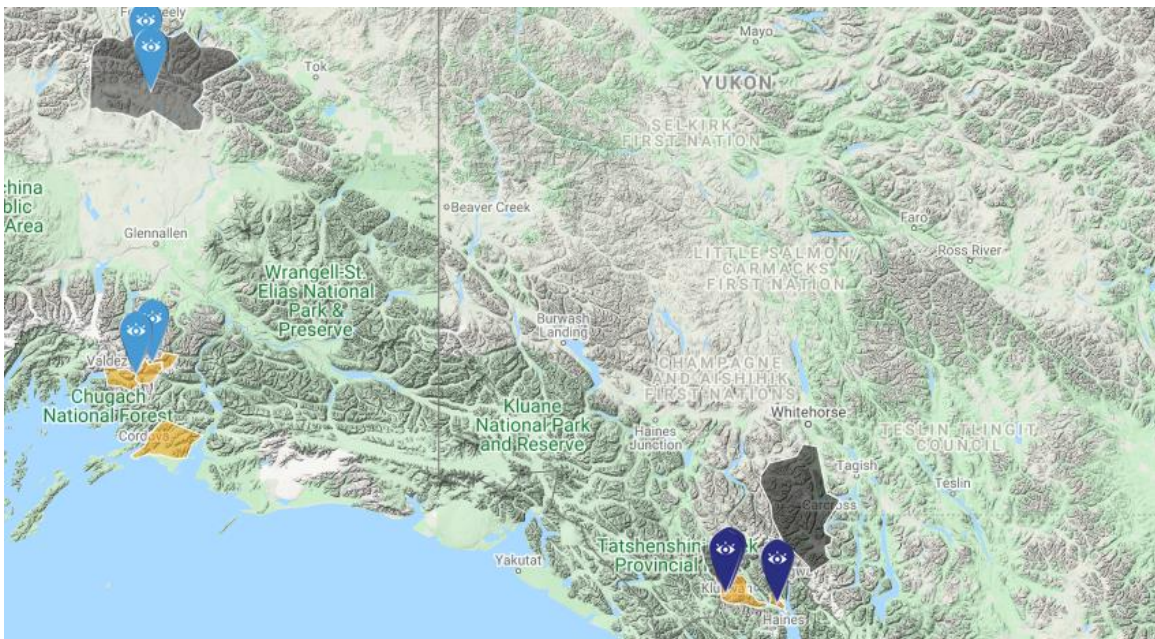
- Central Interior and the Middle Tanana Valley – 3:00 P.M. today through noon tomorrow. 3 to 7 inches of snow.
- Taiya Inlet and the Klondike Highway – until 6:00 P.M. tomorrow. Up to 5 inches of snow accumulation is possible along the Klondike Highway at elevations above 1800 feet.
- Deltana and Tanana Flats and the Upper Tanana Valley – until 6:00 P.M. tomorrow. 3 to 5 inches of snow.

A Special Weather Statement has been issued for the Western Kenai Peninsula. Another round of mixed wintry precipitation is expected to begin late this morning and continue through tomorrow morning.

A Special Weather Statement has been issued for Valdez and Thompson Pass. Periods of heavy snow are expected in the area overnight. 12 to 18 inches of snow accumulation is possible.

For more information and the most current weather, Watches / Warnings / Advisories go to: <http://www.weather.gov/arh>.

Avalanche Forecast:



There are areas near Haines, Thompson Pass, Valdez and Cordova with considerable risk, and near Hatcher Pass with high risk.

Check the Avalanche Forecast Center closest to your area for the most up to date information on avalanche potential. <https://alaskasnow.org> or <https://www.weather.gov/afc/avalancheweather>

The Next Situation Report: will be 18 February 2022. A significant change in the situation or the threat level will prompt an interim report.

This report is posted on the internet at <https://ready.alaska.gov/sitrep>. To register for email distribution, go to <http://list.state.ak.us/mailman/listinfo/dhsem.situation.report>. Direct questions regarding this report to the SEOC at 907-428-7100 or seoc@alaska.gov